

Sept 19-06 -
Inmake deeds for Larson's subdividing the land contained in the following deed.

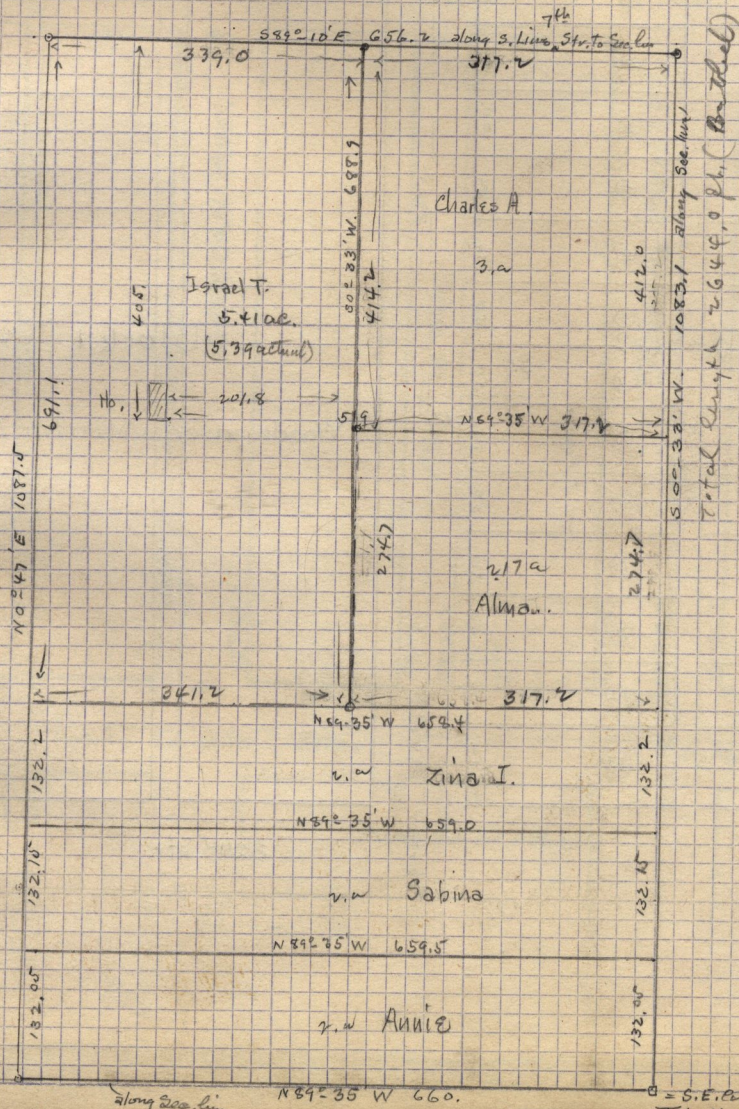
45
371

deed from Axel Lindstrom & wife to Thekla Larson, March 15-1904.

Pt. 3. E 1/4 Sec. 16, T. 6. N. R. 1. W. - Beg. 3. E. C. v. 1/4 - 789° 35' W 660. ft. along S. line of 1/4 sec. N 0° 47' E 1087.5 ft. to S. line Co. road 75 ft. S 89° 10' E 656.2 ft. along S. side of 7 1/2 St. to E. line of 1/4 sec. South 0° 33' W 1083.1 ft. along the E. line of 1/4 side, to beg. 16. 41' Sec. more or less.

Traverse Table of above beg. at 3. E. C. v. of Sec.

N 89° 35' W	660.0	N -	S -	E	W
N 0° 47' E	1087.5	48		14.9	659.9
S 89° 10' E	656.2	1087.4		656.1	
S 0° 33' W	1083.1		9.5		
			1083.0		10.4
		1092.2	1092.5	671.0	670.3



along Sec. line

N 89° 35' W 660.

S. E. C. v. 322.16
T. 6. N. R. 1. W.